



Dual DeepWorker 2000



The **Dual DeepWorker 2000** is a two-person, one atmosphere submersible manufactured by Nuytco Research Ltd. The submersible can operate in depths up to 600 metres. Each person has a 24-inch diameter acrylic viewing dome, which gives an expansive field of view and is used to enter/exit the submersible. The **Dual Deep Worker 2000** has a favourable weight to power ratio and six thrusters, giving it superb manoeuvrability. **Dual DeepWorker 2000** is equipped with PAX controls, meaning the pilot can pass the control to the passenger. The **Dual DeepWorker 2000** is ideally suited for underwater scientific research, survey, salvage and film work.

Specifications

General:

- 600m depth-rated
- 1 Pilot, 1 Passenger
- A516 grade 70 steel
- Weight in air 7500lbs
- Length: 8.6 ft. (2.6 m)
- Beam: 7.0 ft. (2.1 m)
- Height: 6.7 ft. (2.0 m)
- PAX control: passenger may pilot
- 1,000 lbs Payload Capacity

Life Support:

- 2 Redundant oxygen systems, total capacity 80 man-hours
- Carbon Dioxide removed via scrubbers
- Emergency breathing gas via air BIBS

Propulsion:

- Four main horizontal thrusters, plus two vertical/lateral thrusters
- 680 cu.ft. ballast air provided for surface buoyancy/trim

Viewing:

- Two 24" dia. Acrylic domes; serve as entry hatches

Communication:

- Surface: Marine VHF
- Sub-surface: UQC and 27 KHZ Acoustic

Power:

- 22 KW, 270 V DC On board Li-Ion battery supply

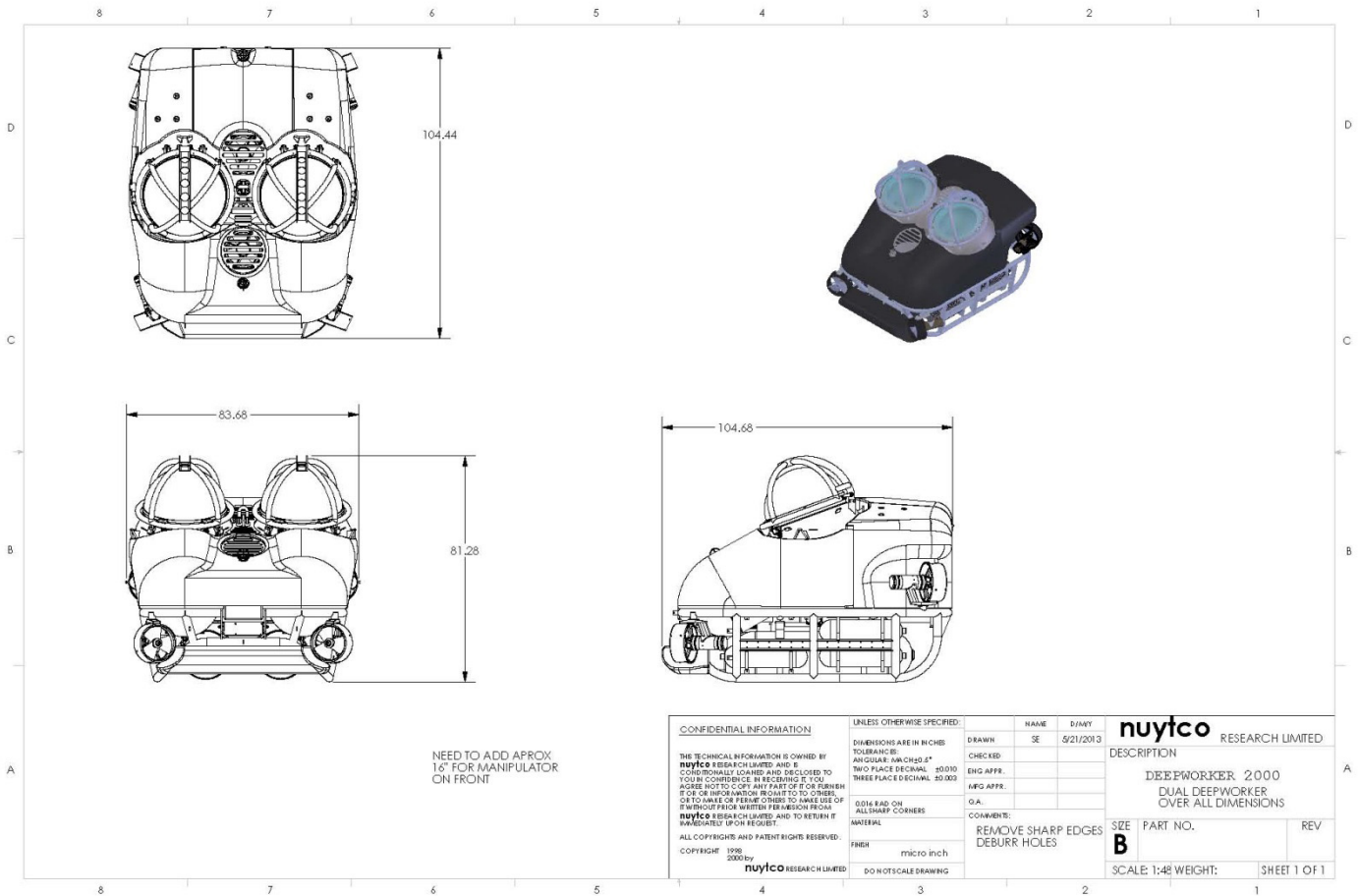
Nuytco Research Ltd

216 East Esplanade, North Vancouver
B.C. V7L 1A3 Canada

Phone: 604 980 6262
Email: nrl@nuytco.com
Web: www.nuytco.com



Dual DeepWorker 2000



Emergency Equipment:

- Drop weight jettison capability
- Main battery jettison capability
- Emergency battery
 - Powers comms and CO2 scrubber

Umbilical:

Vehicle may be operated tethered or untethered

Optional Equipment:

- HD Camera, H.264 (Blu-Ray Codec) camera
- SONAR, modified Imagenex, standard scan and ultra-high resolution short range scan

- 1 x 6 Function plus 1 x 4 Function Manipulators
- Tracking Beacon
- Strobe/RF/Iridium beacon
- Electro magnet
- Magnetometer
- Burial/ excavation pumps
- Sampling equipment
- Precision laser measuring system
- Pipe tracker
- Lift bag salvage module
- U/W cutting module
- Acoustic thickness/CP/EMF Probe
- Other optional equipment available

Nuytco Research Ltd

216 East Esplanade, North Vancouver
B.C. V7L 1A3 Canada

Phone: 604 980 6262
Email: nrl@nuytco.com
Web: www.nuytco.com